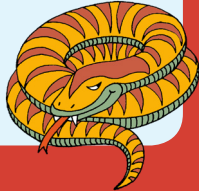


**Don't let Devon  
go to waste**

To download and print the Snakes and Ladders board and instructions for playing the game, go to: [zone.recycledevon.org/teachers](http://zone.recycledevon.org/teachers)

**Contamination alert!**

Your Eco Team check the recycling bins and find crisp packets and apple cores.



**Waste alert!**

Somebody accidentally prints off 300 letters instead of 30.



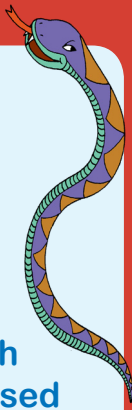
**Recycling alert!**

You discover the head teacher's office does not have a recycling bin.



**Recycling alert!**

You spot some recycling boxes which are being used to store PE equipment.



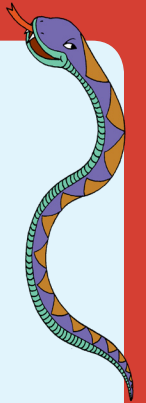
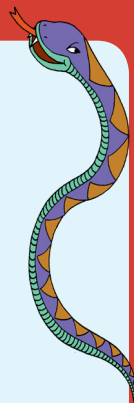
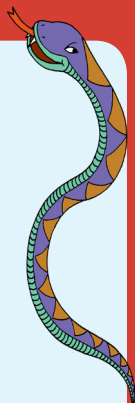
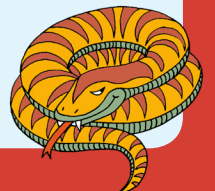
**Reuse alert!**

A parent from the PTA buys disposable cups and plates for the school Christmas party.



**Waste alert!**

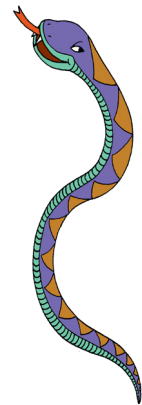
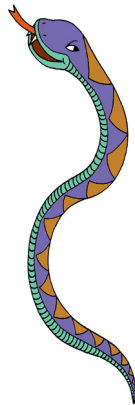
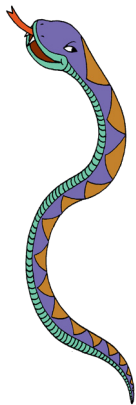
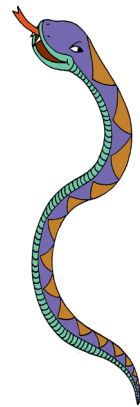
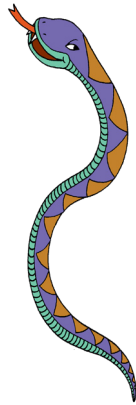
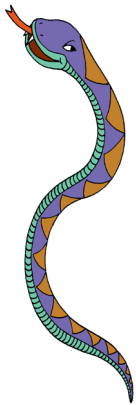
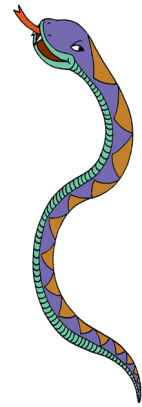
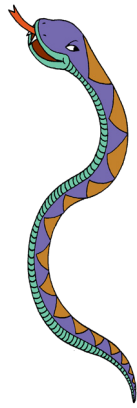
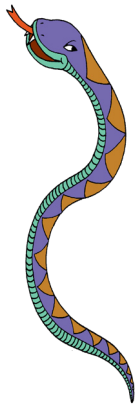
Lots of children are using 3 or 4 paper towels to dry their hands.



**Don't let Devon go to waste**

Create your own extra snake cards here.





**Don't let Devon  
go to waste**

To download and print the Snakes and Ladders board and instructions for playing the game, go to: [zone.recycledevon.org/teachers](http://zone.recycledevon.org/teachers)

**Packaging alert!**

Lots of children bring cartons and pouches of juice in their packed lunches.



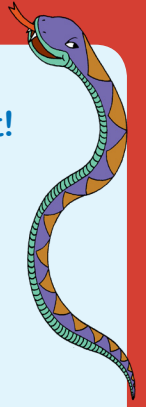
**Composting alert!**

The compost bin in your school grounds hasn't been used for years.



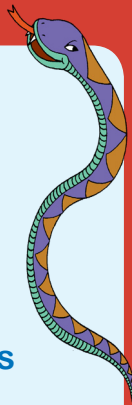
**Waste alert!**

You find a bin full of dried up felt pens because children didn't put the lids on.



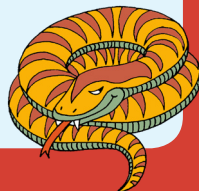
**Recycling alert!**

The school kitchen stops recycling its food cans.



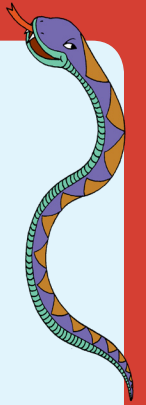
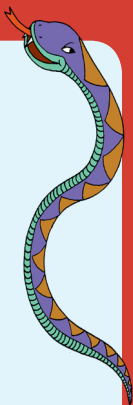
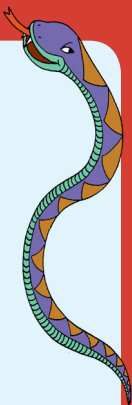
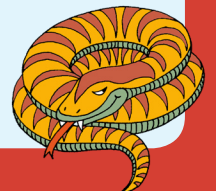
**Waste alert!**

You do a waste audit and find you have more rubbish in your bins than last time.



**Reuse alert!**

Most of the paper in your recycling bins has only been used on one side.



**Don't let Devon go to waste**

Create your own extra snake cards here.

